

ROLLSTORE

MATERIALS HANDLING EQUIPMENT

MANUFACTURE | RENTAL | REPAIR | DESIGN

TECHNICAL DATA SHEET

Folding Stillage

Product Code: RSPC0245

Keypoints:

- Large storage capacity of 1200kg.
- Drop down gate to help the loading and unloading of items.
- Finished in durable bright electroplated zinc with lacquer topcoat.
- When fully open these pallets can be stacked up to 4 high. (weight permitting)

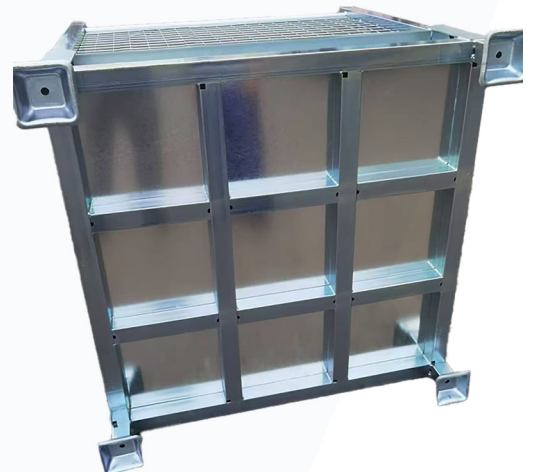
Specifications:

Overall Dimensions: 1125 x 1125 x 1000mm (WxDxH)

Folded Dimensions: 1140 x 830 x 170mm (WxDxH)

Safe working load: 1200kg

Finish: Electroplated zinc with lacquer top coat



www.rollstore.co.uk



sales@rollstore.co.uk



01773 717840



Heanor Gate Rd,
Heanor, DE75 7RG